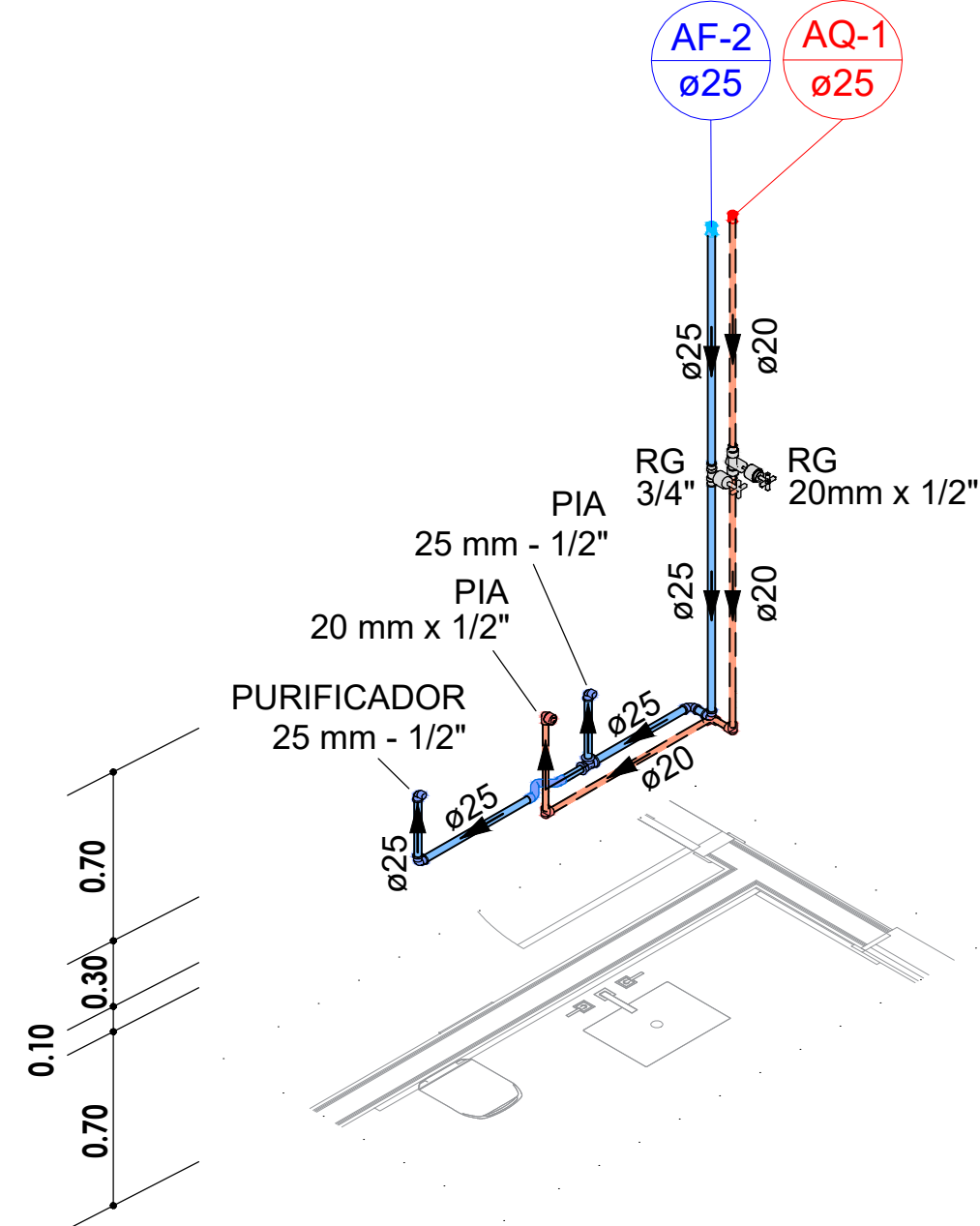


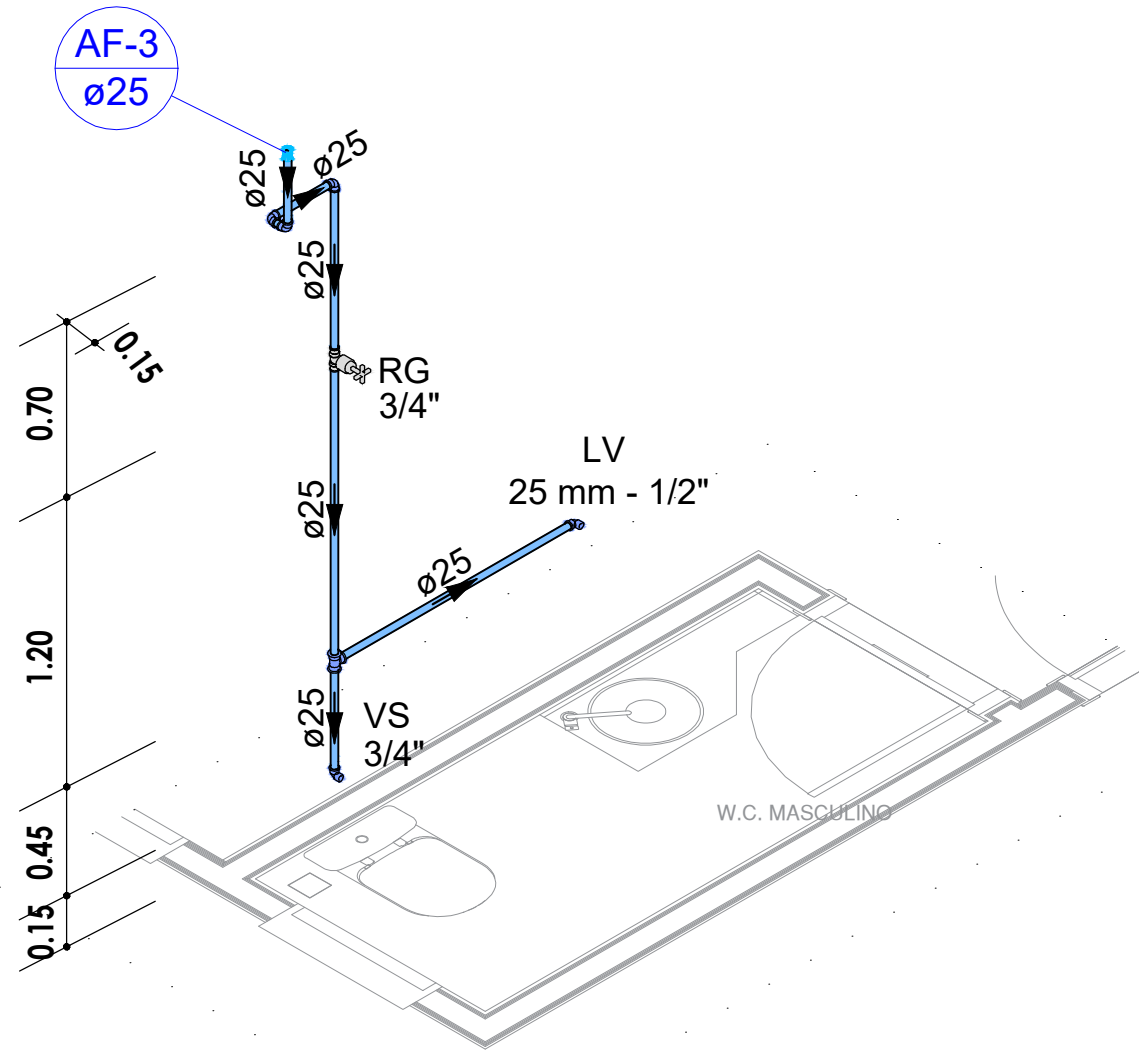
DETALHE HID-1

ESC 1:50



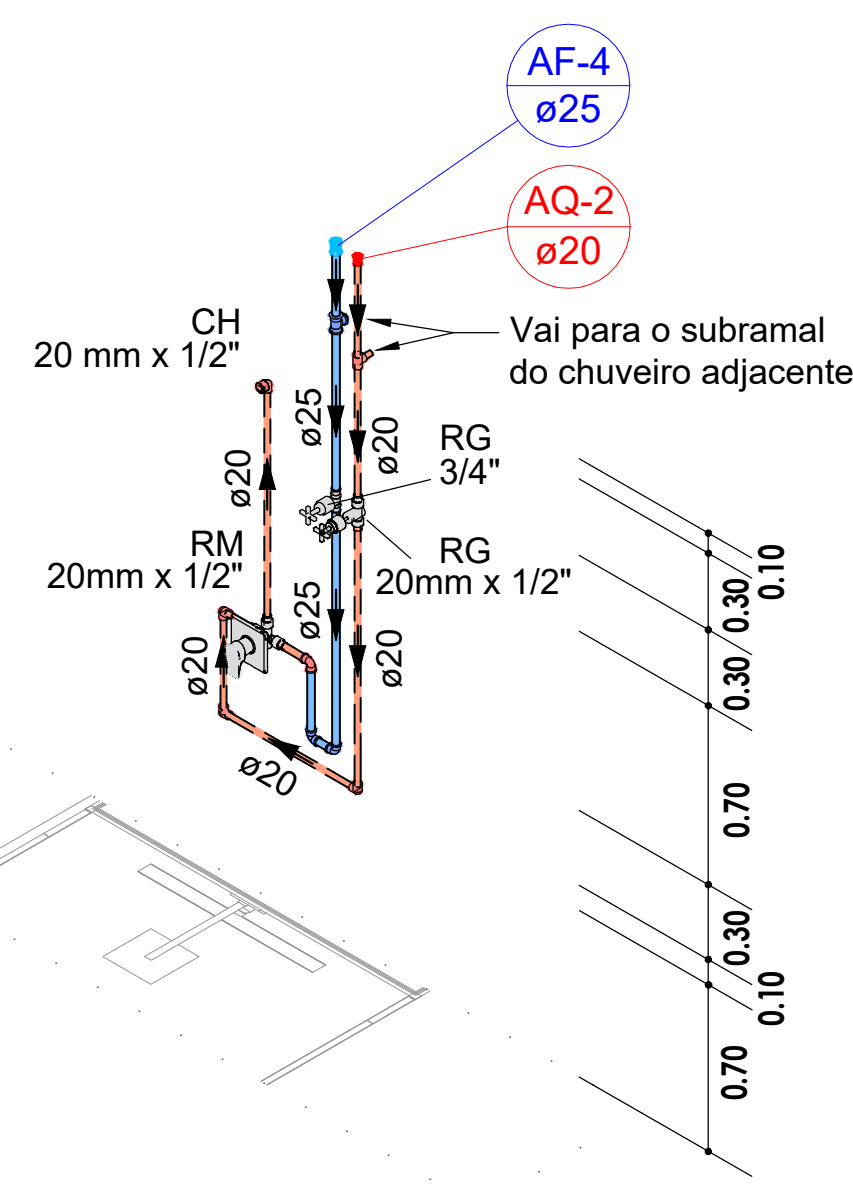
DETALHE HID-2

ESC 1:50



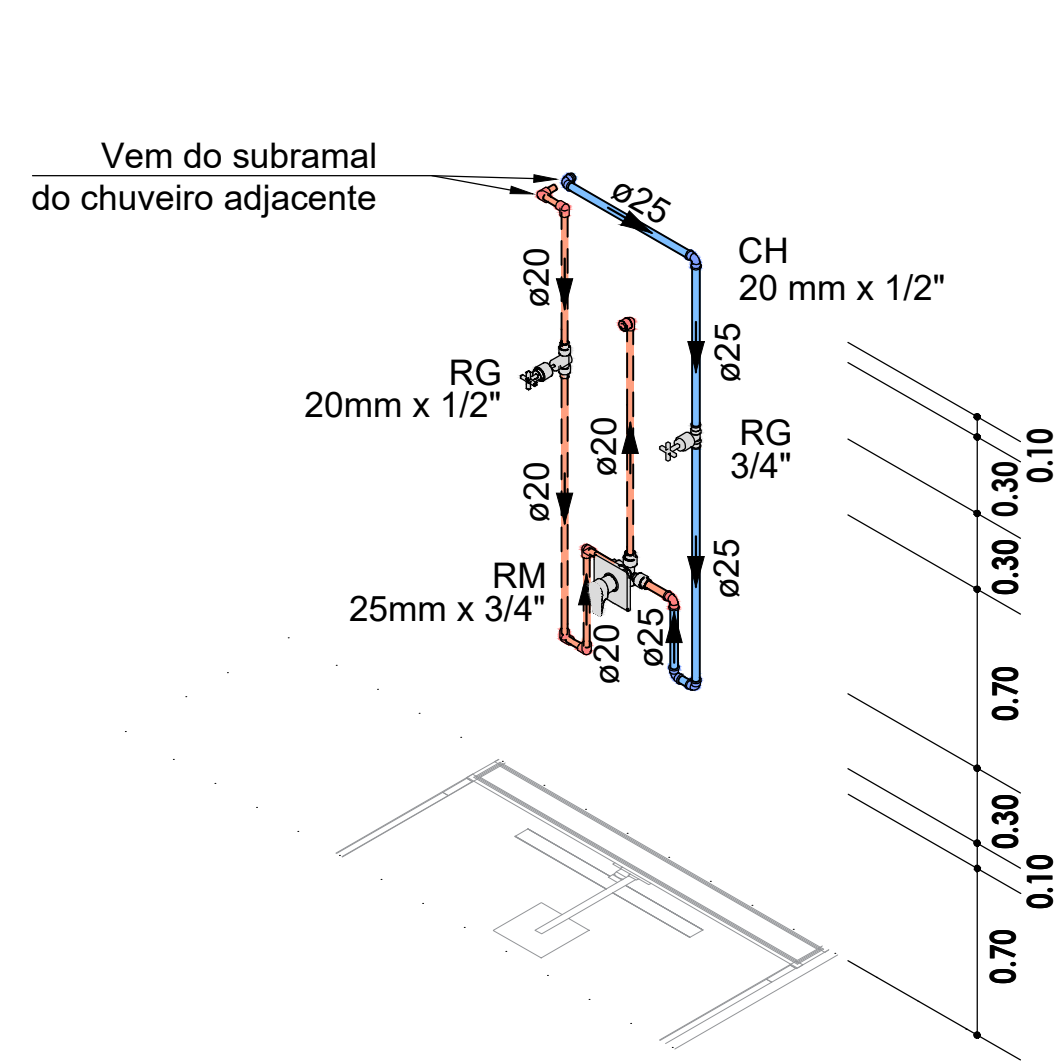
DETALHE HID-3

ESC 1:50



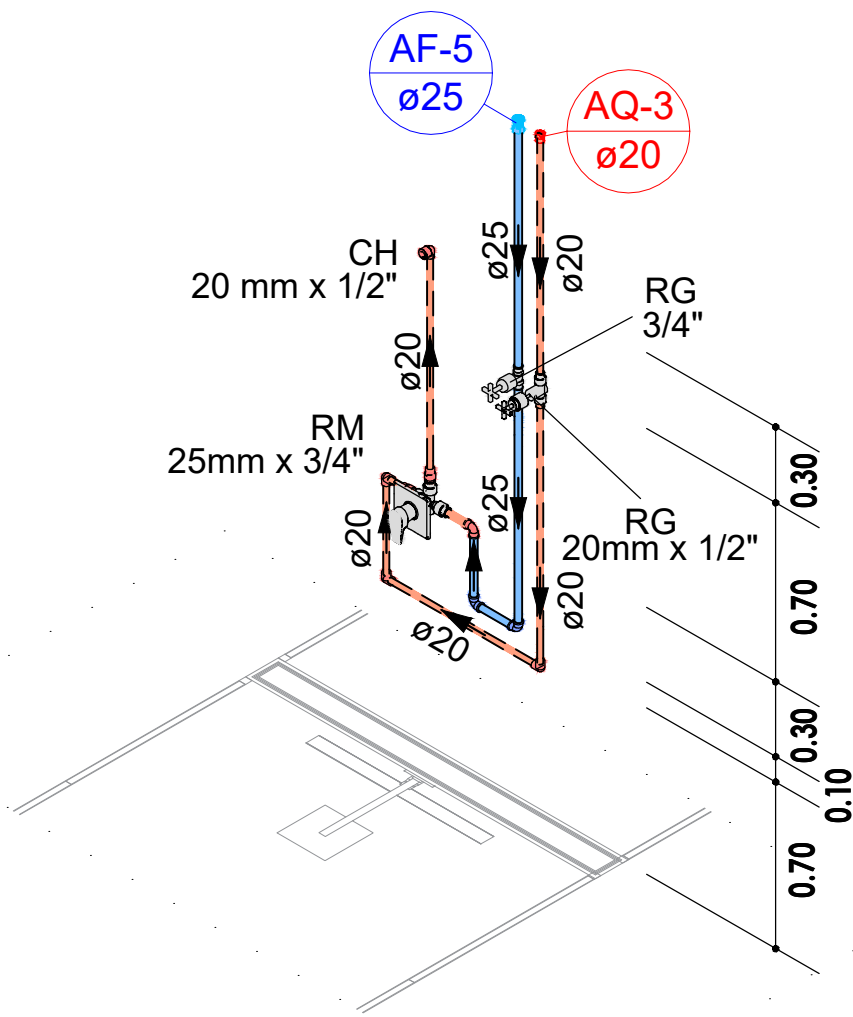
DETALHE HID-4

ESC 1:50



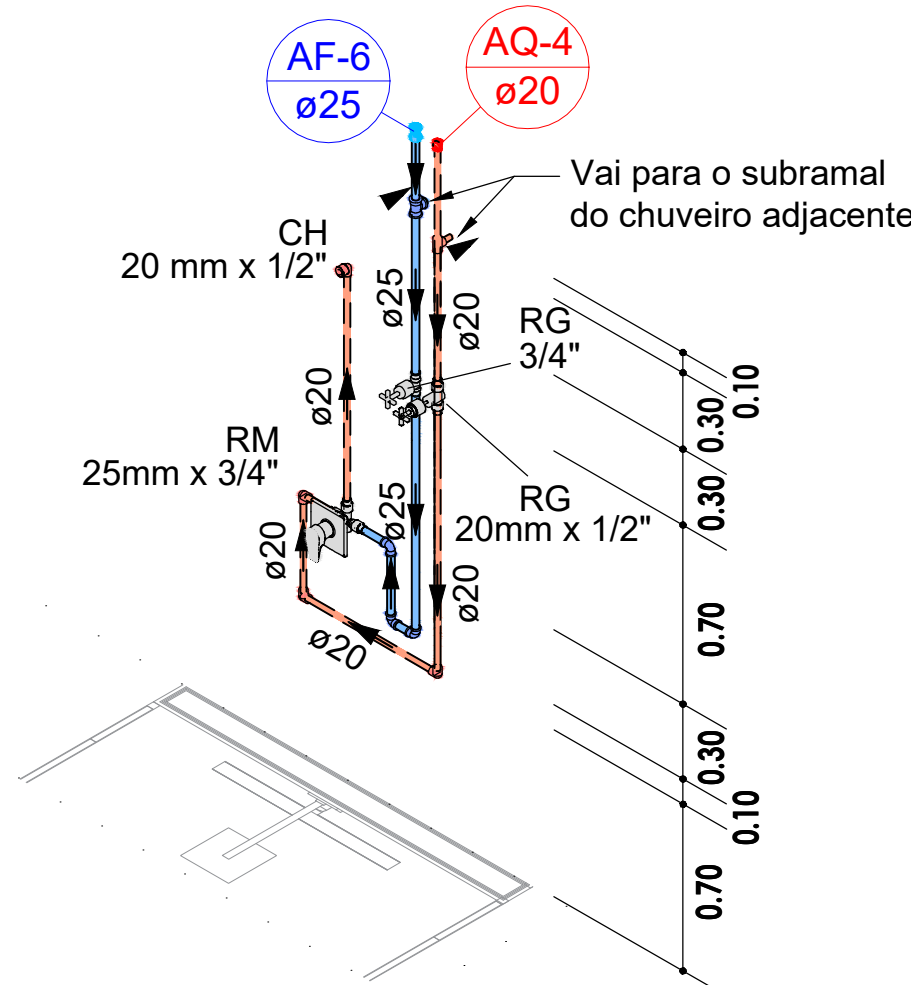
DETALHE HID-5

ESC 1:50



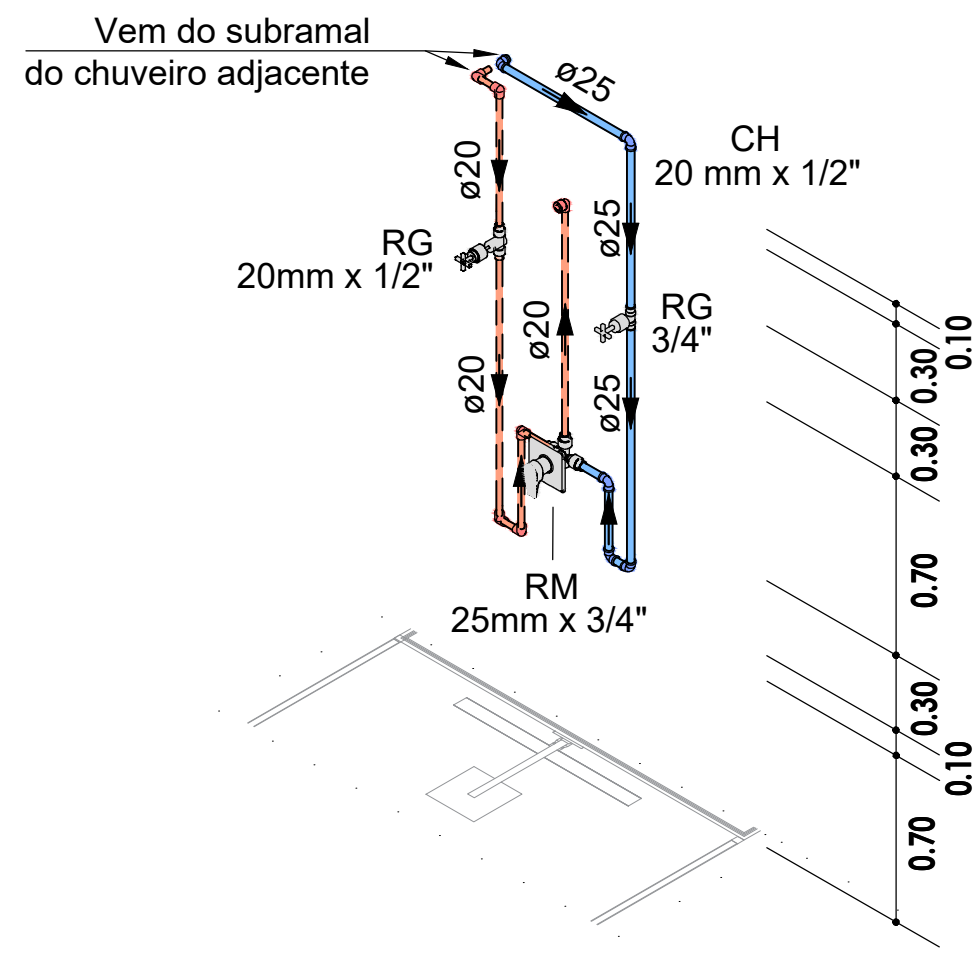
DETALHE HID-6

ESC 1:50



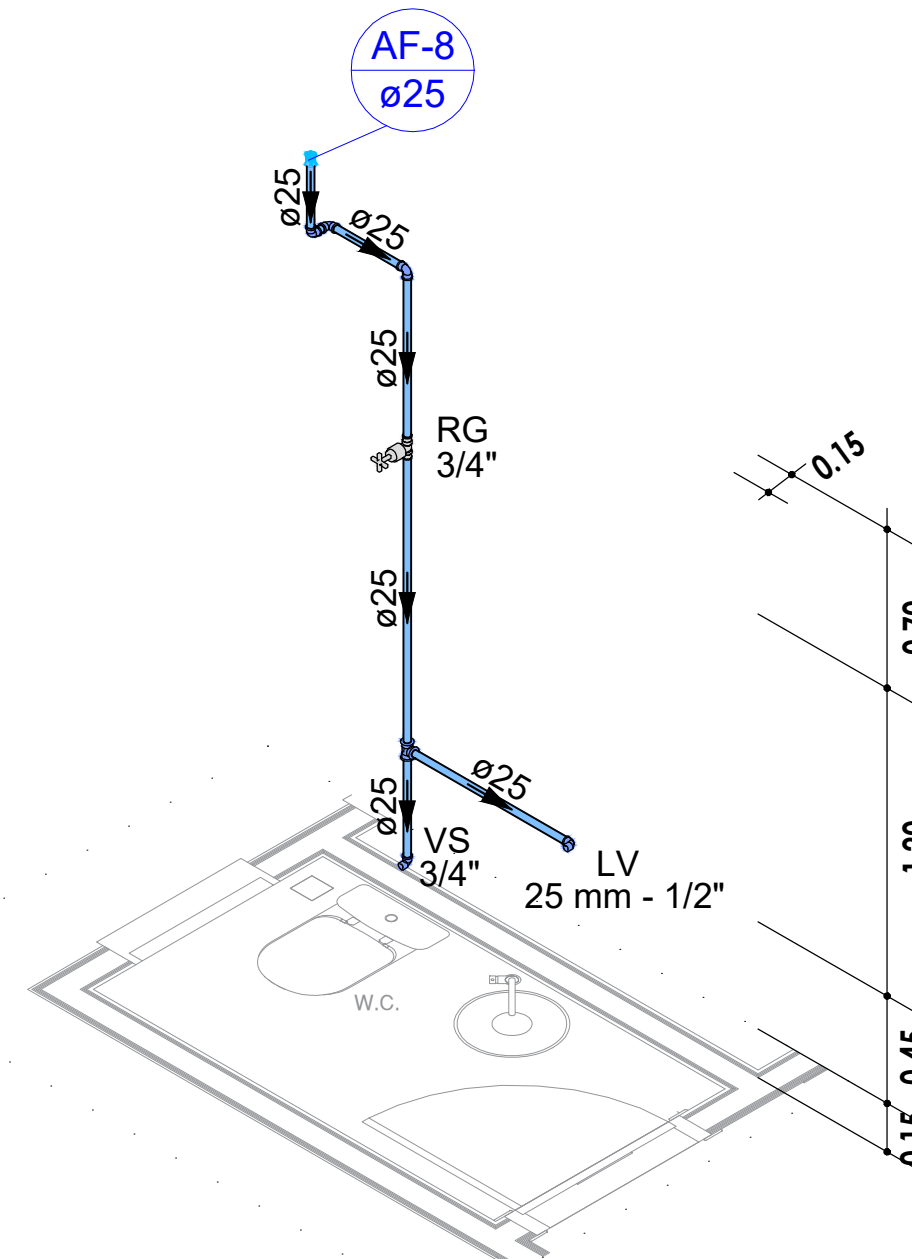
DETALHE HID-7

ESC 1:50



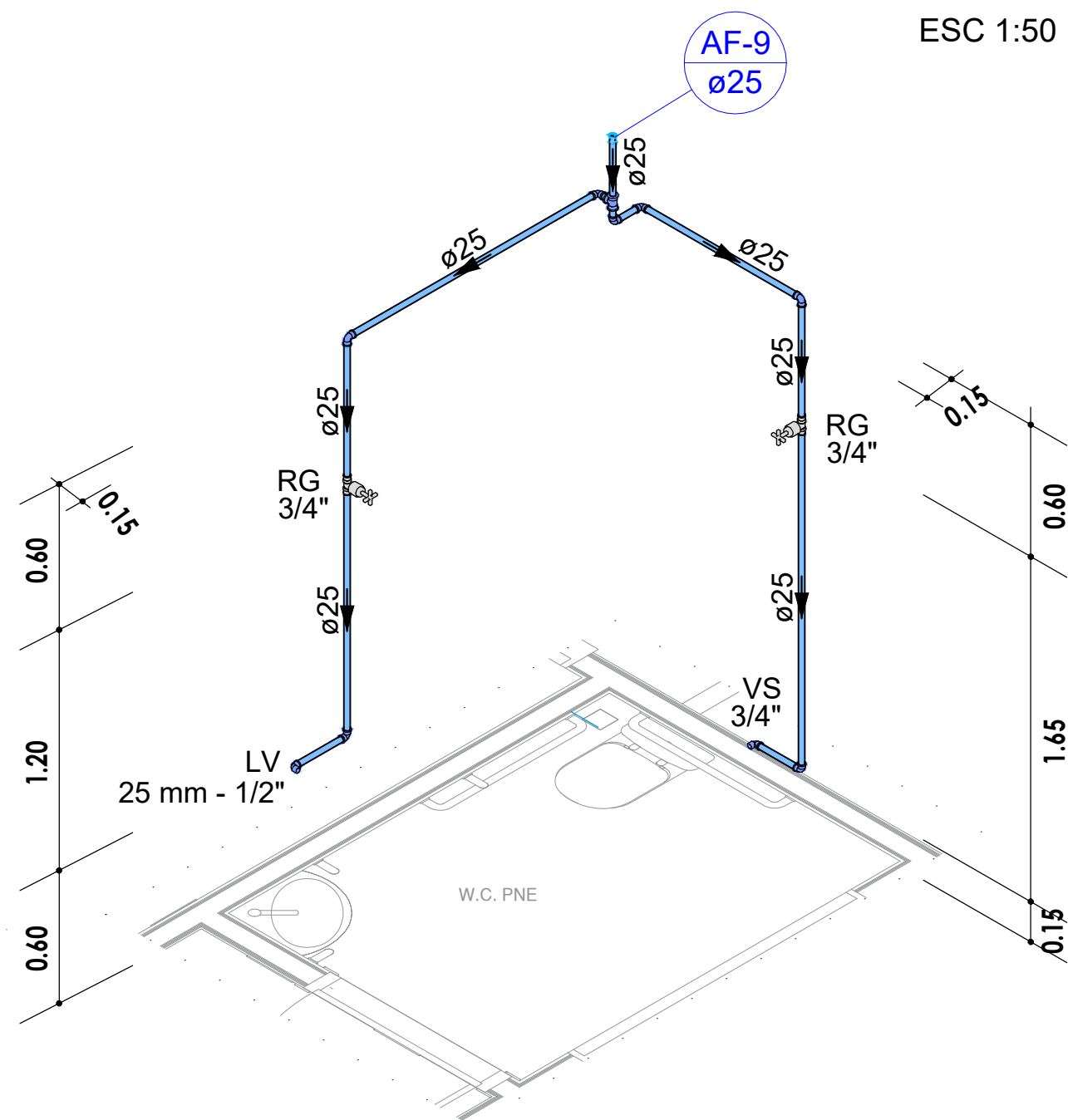
DETALHE HID-8

ESC 1:50



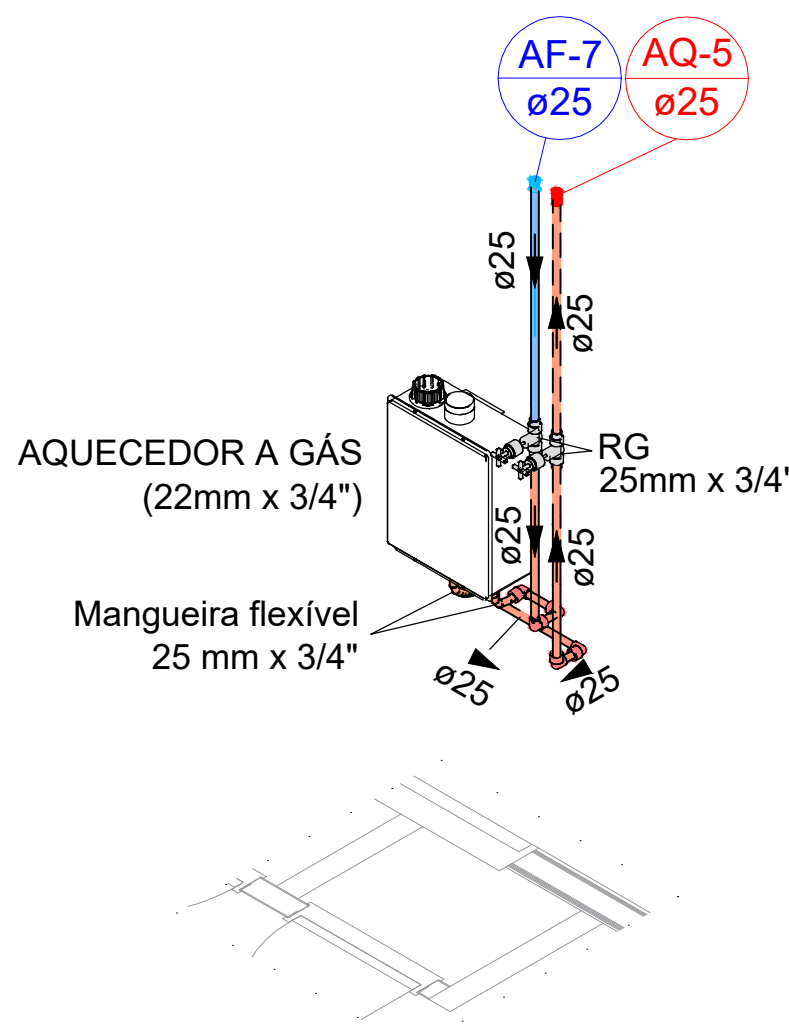
DETALHE HID-9

ESC 1:50



DETALHE HID-10

1:50



DETALHE HID-11

ESC 1:50

ORGÃOS PÚBLICOS:			
<div></div> <div>RUPP ENGENHARIA E ARQUITETURA</div> <div>CNPJ 45.385.131/0001-72</div> <div>FONE (49) 9 9177-9340</div>		NOME DA OBRA:	
		EMPRESA BRASILEIRA DE PESQUISA AGROPECUÁRIA - EMBRAPA	
		ENDEREÇO:	
		BR-153, KM 110, VILA TAMANDUÁ, CONCÓRDIA/SC	
		PROJETO HIDRÁULICO	
DESCRIÇÃO:			
PORTARIA AVIÁRIOS (CEA) - DETALHES 01			
<div></div> <div>EDUARDO J. B. RUPP</div> <div>CREA/SC: 140616-4</div>		<div></div> <div>EMPRESA BRASILEIRA DE PESQUISA AGROPECUÁRIA</div> <div>CNPJ: 00.348.003/0001-10</div>	
REVISÃO:	ESCALA:	DATA:	PRANCHA:
REV 001	INDICADA	SETEMBRO 2024	02/04